

# AccessManager Professional

## Quick Guide

SQL EXPRESS  
NAC-5000



## Program Installation Procedure

Follow the steps to install the program and register a terminal.

1. Install and configure SQL Express.
2. Install AccessManager Professional.
3. Configure AccessManager and register administrator.
4. Configure terminal network.
5. Register terminal at AccessManager.

## Installing and configure SQL Express

- ① Start the executable file of SQL Express. Accept the license agreement and click [Next].



.NET Framework 2.0 must be installed on system before SQL Express installed.

- ② Click [Install] and install the essential components. After installing the essential components, click [Next] to proceed with the installation.
- ③ Click [Next] and start the Installation Wizard for Microsoft SQL Server.
- ④ After the system configuration check is completed, click [Next].
- ⑤ Input the registration information and click [Next].

- ⑥ Select the components to install as shown below, and click [Next].



- ⑦ Select [Mixed Mode]. Enter the password and click [Next].



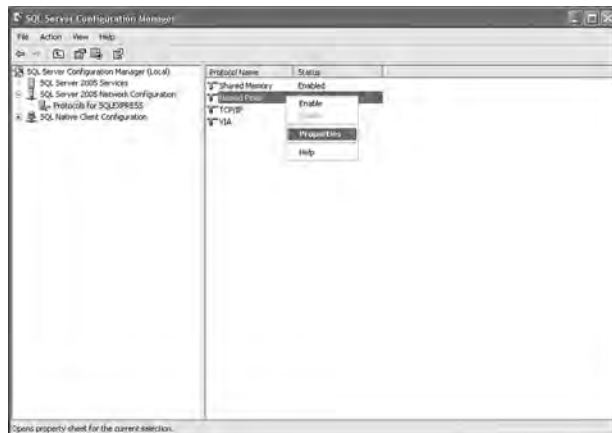
- ⑧ Click [Next] on the Error and Usage Report Settings window.

⑨ Click [Install] on the Ready to Install window. After the selected components are installed, click [Next].

⑩ After SQL Express is installed, click [Finish] SQL Express.

### Configure SQL Express

- ① Click the Windows [Start] button, [All programs -> Microsoft SQL Server 2005 -> configuration tools -> Click the SQL Server Configuration Manager] menu.
- ② After starting SQL Server Configuration Manager, click [SQL Server 2005 Network Configuration -> SQL EXPRESS Protocol]. On the right side of the window, click [Named Pipe] and [Properties].



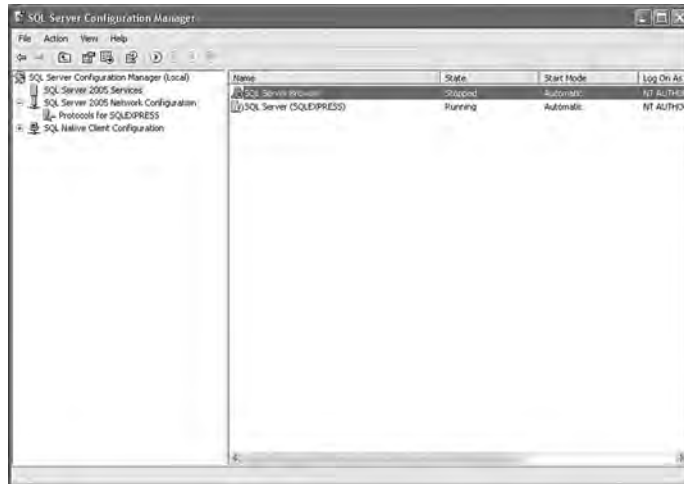
③ In the Named Pipes Properties window click [Enabled] -> [Yes] and click [Apply].



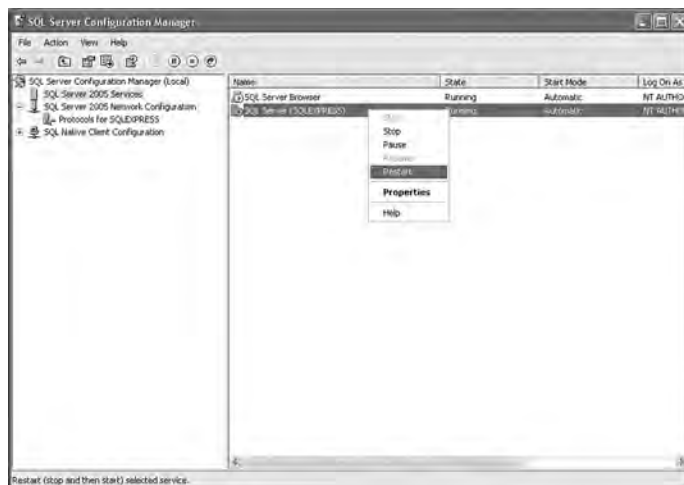
- ④ Click [Apply] and a message window will appear. Click [Yes] to apply the configuration and close the window containing the indicated pipe's registration information.
- ⑤ Select [Properties] from [TCP/IP].
- ⑥ In the TCP/IP Properties window, click [Enabled] -> [Yes] and click [Apply].
- ⑦ Click [Apply] A warning message will appear. Click [OK] and close the TCP/IP Properties window.
- ⑧ After applying all changes, move to [SQL Server 2005 service], select [SQL Server Browser], and click [Properties]

Go to the Service tab on the SQL Server Browser Properties window, and click [Start Mode] and [Automatic]. Then click [Apply].

After changing the Start Mode option, click [Start Service] restart the SQL Server Browser.



Select [SQL Server (SQLEXPRESS)] and restart the SQL Server (SQL Express) by clicking [Restart].



## Installing AccessManager Professional

This section describes how to install AccessManager Professional for AccessServer.

- ① Double-click [setup.exe] in the program installation CD. When the installation wizard startup screen appears, click [Next].
- ② Read the license agreement and accept its terms , Check [I accept the terms of the license agreement] Click [Next].
- ③ Enter the user information and serial number, and click [Next].
- ④ Select [AccessServer installation] and click [Next].
- ⑤ If the database server is SQLEXPRESS, input the server IP and the instance name (default : sqlexpress).Click [Next].



- ⑥ Enter database server's administrator ID (default : sa) and password, and click [Next].
- ⑦ If the wrong database IP address or instance were entered, or if the wrong administrator ID or password were entered, a warning message will appear.
- ⑧ Enter the installation path of the database to be used by the AccessManager program, and click [Next]. The default installation path is shown below AccessManager.

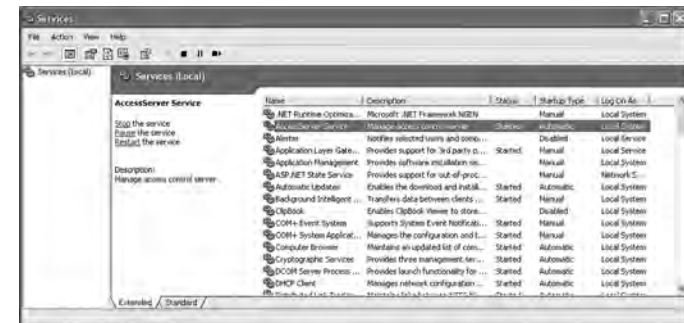


- ⑨ After setting the database installation and the database storage paths, a program installation window will appear. Click [Install].
- ⑩ After the necessary files are installed, an installation completion window will appear. Click [Finish].

## Configure AccessManager and register Administrator

### ① AccessServer Execution

After installing the program, AccessServer is registered in window service. Window control panel -> Management Tools -> Service -> Select [AccessServer Service] Click start the service.



After AccessServer executed, an icon will appear on the Windows tray as shown below.



## ② Reconfiguring Network for AccessManager


Windows start button -> all programs -> AccessManagerPro -> AccessManager.

If AccessManager fails to connect to AccessServer or is being executed in a remote place for the first time, the network must be reconfigured.

Click [Setting] and a window for entering AccessServer's network address will appear as shown below.

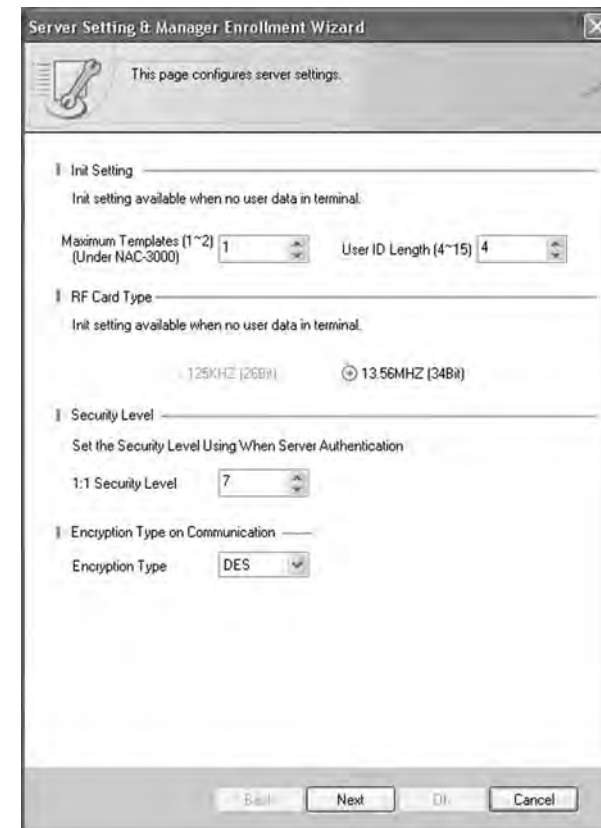


Enter the IP of the system in which AccessServer is installed and click [Yes] to connect to AccessServer.

 The Remote Administrator program can function only while AccessServer is operating. Start AccessServer before using Remote Administrator.

## ③ AccessManager Execution and Configuration

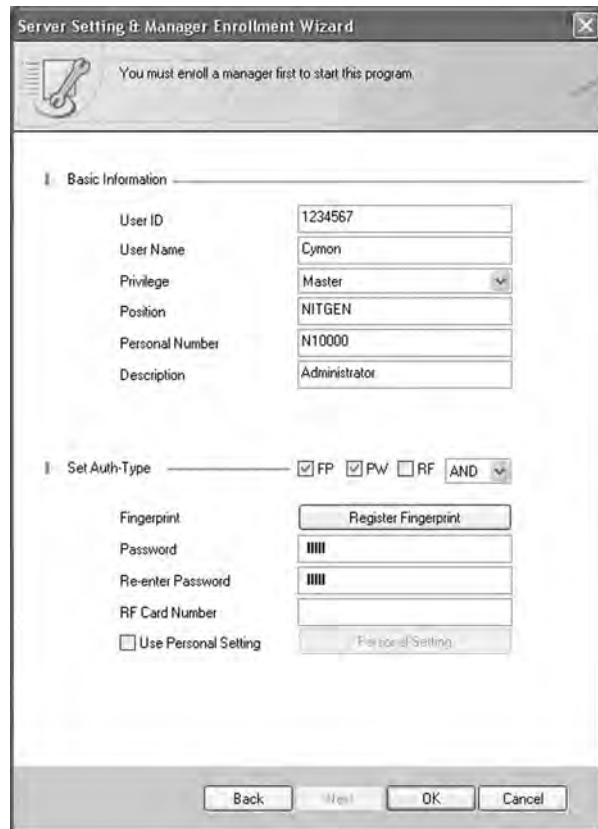
If AccessServer is accessed after the network configuration is changed, the following server configuration and administrator registration wizard window will appear.



Enter the necessary values and click [Next] to go to the administrator registration window.

## ④ Administrator Registration

The administrator of AccessManager is registered in this window.



**Server Setting & Manager Enrollment Wizard**

You must enroll a manager first to start this program.

**I. Basic Information**

User ID	1234567
User Name	Cymon
Privilege	Master
Position	NITGEN
Personal Number	N10000
Description	Administrator

**II. Set Auth-Type**

☒ FP ☒ PW ☐ RF AND

Fingerprint:

Password:

Re-enter Password:

RF Card Number:

☐ Use Personal Setting

Buttons: Back, Yes, OK, Cancel

The user ID and user name must be entered.

Enter the necessary values and select the authorization method (fingerprint, password, etc) and click [Yes] to complete administrator registration and start AccessManager.

## Configure Terminal Network

## Entering Administrator Menu



1. To enter the Administrator menu, touch the [Admin] button at the lower right of the screen.
2. Input the administrator ID and follow the authentication process. The Administrator menu will be displayed. Because no users have yet been registered, any user can enter the Administrator menu. At least one administrator should be registered for security purposes.

## Normal Setting



1. To enter the Administrator menu, touch the [Admin] button at the lower right of the screen.





2. The [Encryption] field shows whether the data exchanged between terminal servers are encrypted.
3. [Ping Time] checks communication between terminal servers. The default value is 10 seconds, it can be set from 2 to 20 seconds.
4. After completing network configuration, press [Save] at the bottom of the screen.

### TCP/IP Setting



1. Select [Network] -> [TCP/IP], and enter the network information.
2. Enter a unique terminal ID between 1 and 2000. The same terminal ID cannot be used in the same server.
3. Press [ON] in the [DHCP] menu to decide to use DHCP. When using DHCP, enter into the server IP and port information of the server with AccessManager Professional installed.



### Server IP Setting

Enter the IP of the server with AccessServer installed. When inputting the server IP, touch [.] to move to the next field.



### Port Setting

Enter the port number to be used for communication between the server and the terminal. The default value is [7332] and the user can choose between 2000 and 65535.



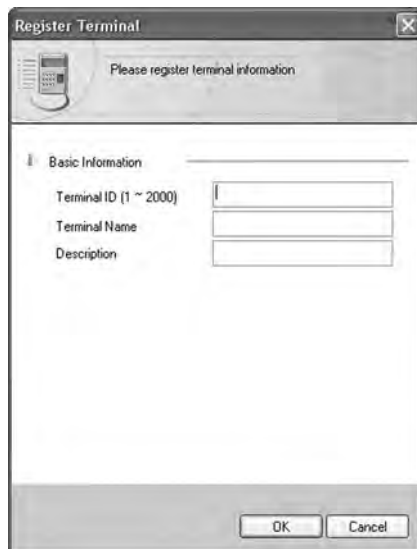
4. If the DHCP option is deactivated, the terminal IP, subnet mask, and gateway must be inputted manually. For more information, contact the service team.
5. Save the network setting data by pressing [Save] at the bottom of the screen.
6. Basic communication link between terminal and AccessServer is achieved.



## Registering Terminals

Select [Manage Terminal] from the Information Management window.

Click [Select terminal] near the top of the list window or double-click a terminal marked as unregistered to open the terminal registration window.



The image shows a 'Register Terminal' dialog box with a close button (X) in the top right corner. Inside the dialog, there is a header area with a terminal icon and the text 'Please register terminal information'. Below this is a section titled 'Basic Information' with a plus icon. Under 'Basic Information', there are three input fields: 'Terminal ID (1 ~ 2000)', 'Terminal Name', and 'Description'. At the bottom of the dialog are 'OK' and 'Cancel' buttons.

Terminal ID (1 ~ 2000) - Enter the terminal ID which will be used for identification by the server.

For a connection to be made, the terminal ID entered in the terminal registration window and the terminal ID set in the terminal must be identical.

This is the last step of the basic preparations for using AccessManager Professional.